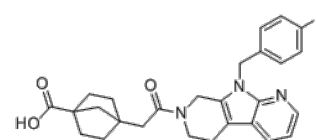


Product Name : ONO-8430506
Cat. No. : PC-38743
CAS No. : 1354805-08-5
Molecular Formula : C₂₇H₂₈FN₃O₃
Molecular Weight : 461.53
Target : Autotaxin
Solubility : 10 mM in DMSO



Biological Activity

ONO-8430506 is a highly potent, orally available autotaxin (ATX) inhibitor with IC₅₀ of 10 nM (recombinant human ATX), exhibits LysoPLD inhibitory activity in human plasma with IC₅₀ of 5.5 nM.

ONO-8430506 suppressed LPA formation in plasma and decreased rat intraurethral pressure in a dose-dependent manner.

ONO-8430506 enhances the antitumor effect of paclitaxel in breast cancer model.

ONO-8430506 (30 mg/kg) ameliorates neuropathic pain derived from lumbar spinal canal stenosis.

References

Iwaki Y, et al. ACS Med Chem Lett. 2020 May 14;11(6):1335-1341.

Caution: Product has not been fully validated for medical applications. Lab Use Only!

E-mail: tech@probechem.com